



## 2026 Art In Architecture Student Design Competition

### Program Requirements and Submission Guidelines

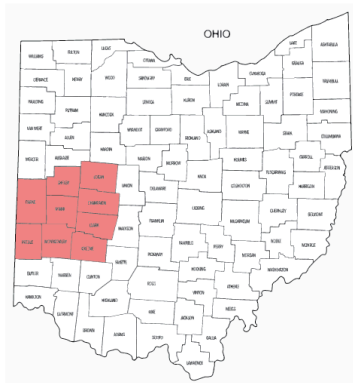


### AIA Dayton's Art in Architecture Student Design Competition

AIA Dayton welcomes you to The Art in Architecture Student Design Competition. The 43rd annual competition is an extra-curricular activity that introduces you to architecture through participation in a design project. You will be provided with the opportunity to interact with design professionals who will serve as mentors and assist you in this learning experience. All students are encouraged to seek the help of an advisor or teacher. We are offering some great prizes, including college scholarships for the top participants. The Honor Award college scholarships can be used at any college of the winner's choice. All awards will be announced at the Awards Presentation at the end of the competition.

### Eligibility

The program is designed for college-bound high school students, grades 9 through 12, interested in art, architecture, or design. The competition is open to all students within AIA Dayton's nine-county geographic region (Champaign, Clark, Darke, Greene, Logan, Miami, Montgomery, Preble and Shelby Counties) and/or zip codes beginning with 453, 454, 455, and 458. The event is limited to the first 80 students who return their registration form with the \$25 per student registration fee. Teachers and advisors are encouraged to share in the fun and can register for free. Teams are not permitted. Instructors, architects, college architecture students, friends, family, and other competition entrants may advise you, but the work is to be your own.





## 2026 Art In Architecture Student Design Competition

### Program Requirements and Submission Guidelines

#### Questions and Communication

Competition participants may address questions about the competition or project to AIA Dayton at [info@aiadayton.org](mailto:info@aiadayton.org). A member of the Student Design Committee will respond in a timely manner. If you wish to have a personal design mentor that can advise on your projects via email, please contact [lauren.mccarroll@thinkchamplin.com](mailto:lauren.mccarroll@thinkchamplin.com), and we will get you in contact with a local design professional.

#### Jury

The competition will be judged by a distinguished group of architects and design professionals, community members or project stakeholders.

#### Awards

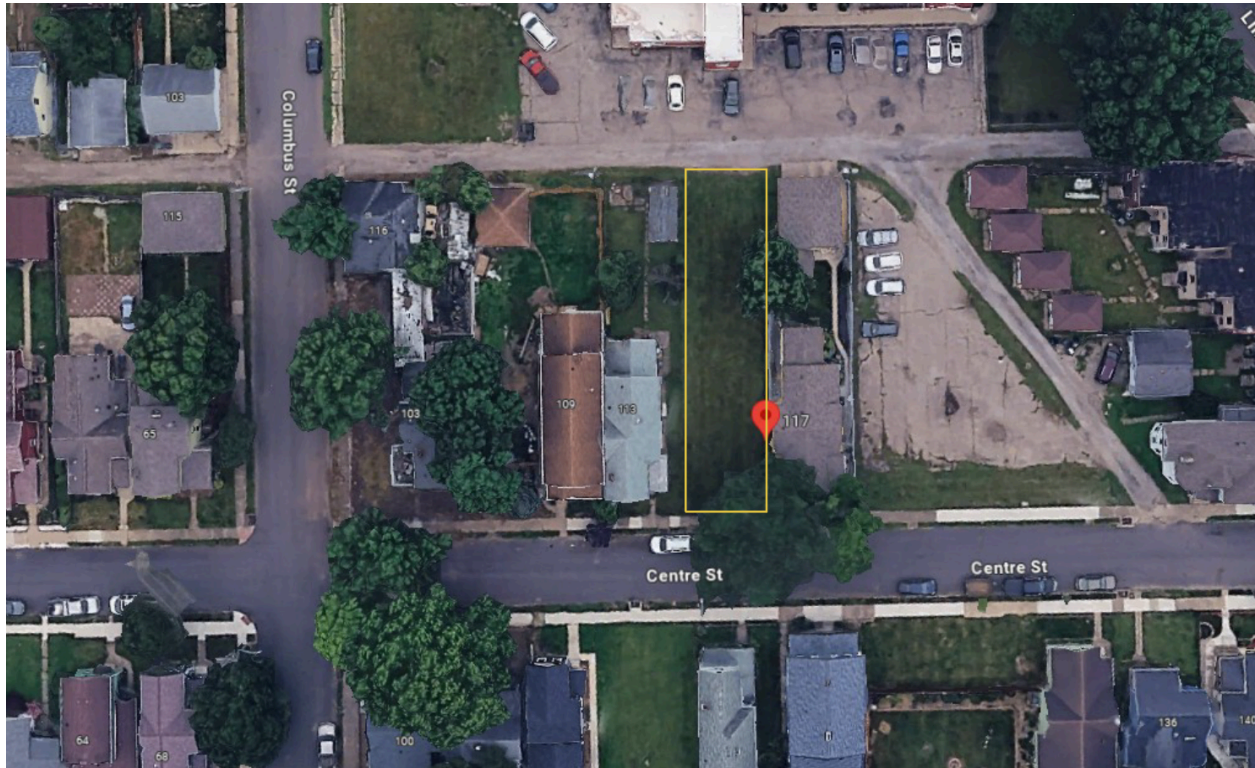
Honor Award:	Monetary Scholarship
Merit Award:	Monetary Scholarship
Honorable Mention (2):	Architectural book award
Future Architect Award:	Awarded for a great concept
Master Craftsperson Award:	Awarded for the best model
Most Creative Use of Materials:	Awarded for creativity in the use of materials

\*Scholarship money will be given to the school's Bursar's office upon receipt of proof of enrollment. In the event a scholarship winner is unable to use the award, it will be donated to the next AIA Dayton Student Design Competition.

## The Project:

**Site:** 117 Centre St, Dayton, OH 45403

Infill parcel found in the Huffman Historic District in Dayton.



## Program

What does it mean to live in a multi-generational household? Designing for a multi-generational house is more than just providing extra bedrooms and bathrooms, it is designing spaces where families can live together comfortably while still preserving areas of privacy and independence. Your design will house 3 different generations. These generations can be various ages depending on your choice. See below for possible living arrangement scenarios:

1. Non-retired grandparents, their adult children, and young grandkid(s).
2. Aging Grandparents, their adult children as caregivers, and college-aged grandchildren
3. Great-Grandparent, Grandparent(s), and Adult(s)
4. Scenario of your choice!

**The Multi-generational home should meet the following criteria:**

- Design should include elements of Universal Design that accommodates all residents regardless of their age, ability, mobility, or life stage. More resources for Universal Design will be made available at the charrette.
- Design should consider the surrounding historic context of the Huffman neighborhood, including design elements such as proportions, building height, and style. The interpretation of style and materiality is the students choice.
- Design should house between 3-8 people, of 3 different generations.
- Design must be a stand alone structure(s)- your design can be one family under one roof, or your design can have up to two structures if you prefer an in-law suite design
- Design may be 1-3 stories above ground and may include a basement if desired.

**Include the following programed spaces:**

*Please note all square footage amounts are a guide to begin your space planning, and are not rules. Please adapt as you see fit for your design.*

- Accessible entry to house
- **Sleeping Spaces** (120SF-300SF each) to accommodate up to 3-8 people. Bedrooms may be shared for children and/or couples. Bedrooms may include closets.
- **2-4 Full Bathroom(s)** (60SF-150SF each), with at least 1 ADA accessible restroom
- **Living Area(s)** (180SF-350SF): multiple living areas may be provided depending on the levels of privacy intended
- **Kitchen Space(s)** (120SF-300SF): multiple kitchen spaces may be provided depending on the levels of privacy intended. However they should include the following:
  - Accessible counters and clear paths for mobility
  - At a minimum include a refrigerator, oven, sink, and counter space for small appliances
- **Dining Space-** (100SF-200SF): Dining space may be a small breakfast nook, bar in the kitchen, or a full formal dining room depending on your design intent.
- **Laundry Room** (40SF-80SF)- can be a walk-in laundry room or closet
- **Landscape/site design:** explore private circulation from the street and alleyway depending on your chosen residents
- **Parking (Optional):** Recommended 1 parking spot per 4 people in the household. Parking can be a gravel spot, covered concrete pad, or garage.

*Continued on next page*

**WILDCARD** Design for one chosen outdoor space, AND one chosen indoor space from the below options:

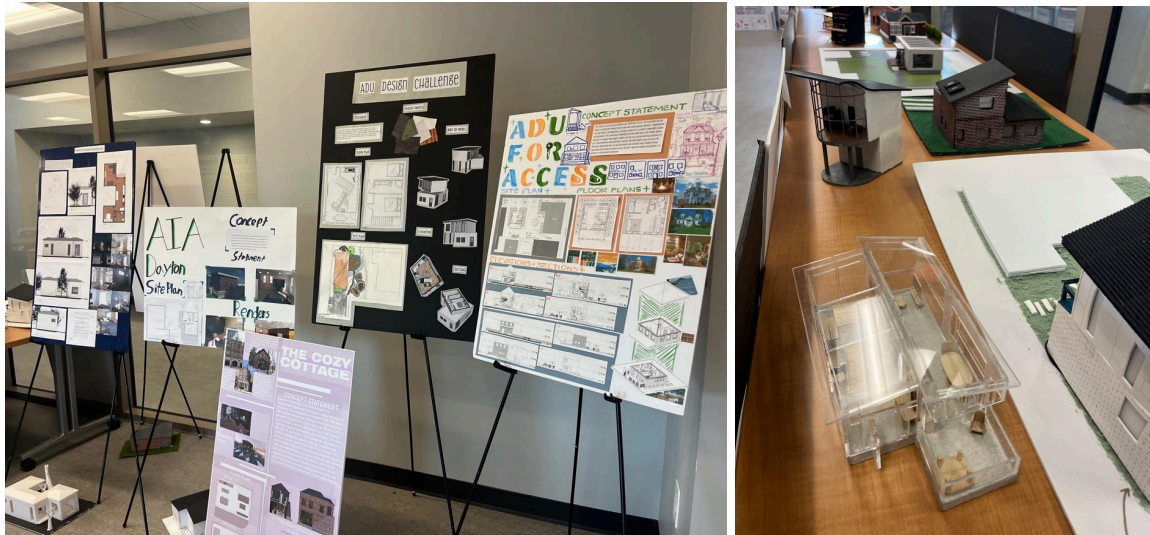
**Choose 1 outdoor space program (variable square footage):**

- 1) Greenhouse
- 2) Roof terrace
- 3) Outdoor Gathering (Living/Dining)

**Choose 1 indoor space program:**

- 1) Playroom- 150SF-300SF
- 2) Home office- 100SF-200SF
- 3) Home Gym- 100SF-200SF

Examples of each program piece will be presented at the Charrette. See info at the end of this document.



### Required Drawings + Model

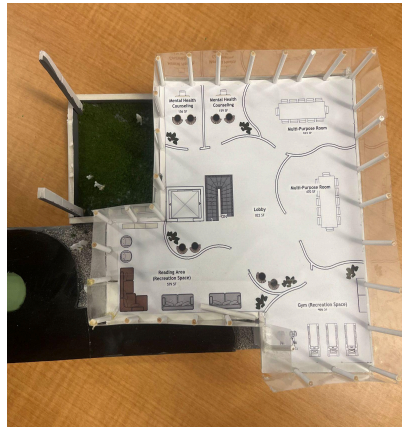
The minimum drawings required for your presentation are listed below. There is a lot of information that needs to be on your project board and careful consideration must be given to the layout to clearly demonstrate your design to the judges. Clearly label all drawing views and scales, if applicable. Clearly label all drawing views and scales. All work is to also be displayed on 1 (one) 24" X 36" foam core board oriented vertically. Three-dimensional objects attached to the board may project outward from the board up to six inches. Use white glue such as Elmer's or Sobo, spray glue such as 3M Spray Mount, or heavy-duty double stick mounting tape. These projects will be hung in a gallery, so make sure everything is firmly attached.

On your board, please include, at minimum, the following (note that recommended scales are for drawing purposes but will then be adjusted to fit on your slide--don't "stretch" your images!):

- Concept Statement: what inspired your design? **Be sure to include your living scenario of who is living in your designed home that informed the design decisions).** (approx.150 words)
- Site Plan of the area directly around your design  $1/16" = 1'-0"$  (if you prefer to show more than the lot of the site, you can decrease your scale to include more of the surrounding context)
- Overall Floor Plan ( $1/4"$  or  $1/8"$  recommended scale)
- Elevation ( $1/4"$  or  $1/8" = 1'-0"$  recommended scale)
- Section drawing ( $1/4"$  or  $1/8" = 1'-0"$  recommended scale)
- Three-dimensional rendered or hand drawn perspective(s)
- Please consider the additional deliverables below:

Other elements to consider adding to your board include:

- Collage of images that inspired your design
- Concept sketches showing progression of ideas
- Material samples being used in the design
- A diagram outlining site research or early design choices
- Any extra details to enhance the design or graphic presentation



### Model

Please include a physical model as well. A model is a great way to demonstrate scale, form, proportion and materiality of your project. The model should be built to  **$1/4" = 1'-0"$  scale**. Your physical model can be constructed of materials of your choosing, including but not limited to, chipboard, foamcore, cardstock, or even can be 3D printed. You do not need to build the entire



## 2026 Art In Architecture Student Design Competition

### Program Requirements and Submission Guidelines

site, but can just focus on modeling the home. **It is highly encouraged to build your model in a way that exterior walls or roof can be removed** so that judges can see the interior of your design as well as an idea of the front facade of the home. See examples above. Be creative, and use your model to showcase your design!

*Your presentation must convey the design intent as fully as possible. Your visual presentation of your design will help you stand out to the judges and will be what truly conveys the intent of your design. Drawings and graphics may overlap so long as they are distinguishable from each other. Be creative and try your hand at using various colors and textures as they relate to your design. Feel free to annotate your work.*

#### Submission Entries

Judging is anonymous, **please do not disclose your name, school or any identifying information on your board**. All entries must have a sealed envelope securely fastened to the back of the presentation board. The envelope will contain a copy of the entrant's name, school, and grade. Entries having the student's name or that of the school displayed in any way on the front or back of the presentation board, or on the model, so as to disclose their identity will be disqualified. There is no limit on the number of entries per school.

#### Ownership

Once submitted for jury, the projects are the property of AIA Dayton. AIA Dayton shall have the right to publicize, display, or authorize the reproduction of any and all design submissions, in each case giving proper credit to the designer. All entries are submitted at the designer's risk. AIA Dayton may choose to hold or release the projects at its discretion.

#### Project Display and Awards Ceremony

The awards ceremony and scholarship announcements will take place in April. Winning projects will be highlighted on the AIA Dayton website and may be shown for public display.

#### Schedule

The schedule begins with a charrette - a fun, fast-paced creative workshop. The charrette will feature local community partners and a tour of the project site. Working with AIA Dayton architects, participants will enjoy creative and challenging design exercises.

**January 24, 2026**      **Charrette + Project Introduction** 11am-2pm  
Registration deadline @ 11:00am  
Location:              St. Paul Methodist Church  
101 Huffman Ave, Dayton, OH 45403



## 2026 Art In Architecture Student Design Competition

### Program Requirements and Submission Guidelines

**March 20th, 2026**      **Submission due** between 4:00 PM and 6:00 PM  
Location: Southeast Branch Library:  
21 Watervliet Ave. Dayton, Ohio 45420 (next to Belmont High School)  
*If your school is to have their spring break the following week, please  
contact us and we can arrange an earlier day to collect your submission.*

**April 4th, 2026**      **Awards Program & Ceremony** 10:00AM-12:00PM  
Location: Southeast Branch Library:  
21 Watervliet Ave. Dayton, Ohio 45420 (next to Belmont High School)

**Please refer to the registration form to enter.**